



ULTRASONIC COMPACT HEAT METER

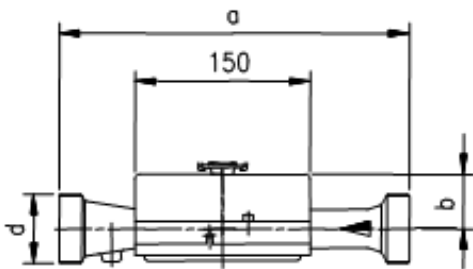
- Versions for heating or combined heating and cooling plants (**Hybrid** model)
- Nominal flow rate: 0.6 to 60 m³/h
- Available with threaded (1/2" to 1 1/2") or flanged connections (DN 25 to DN 100)
- Temperature range: +10 °C ... +130 °C
- Class 2 certified in accordance with Directive 2004/22/EC on measuring instruments (EN 1434)
- No moving parts in the measuring chamber
- Highly sensitive to low flow rates
- Installation in any position
- No straight pipes requirements

CALCULATOR

- 8-digit LCD
- Installation: return flow pipe (optional installation: forward flow pipe)
- Standard IrDA interface/Optional M-Bus VS or pulse output (energy and volume flow)
- Battery service life: 6 years +1/optional M-Bus power supply or external power supply
- 2 optional extra inputs (standard pulse value: 1 p/10 l; the pulse value may be set with the opto head)
- 24 monthly readings, 2 tariff registers
- Protection rating: IP65
- Dimensions: 198 mm x 123.7 mm x 45.8 mm

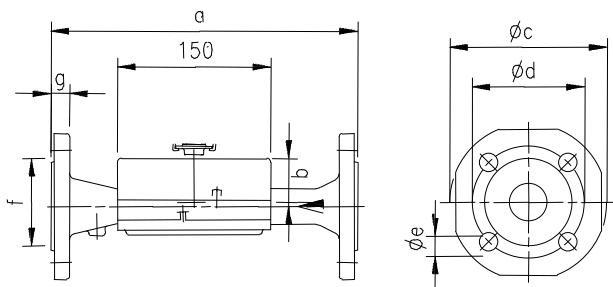
THREADED DESIGN – TECHNICAL DATA & DIMENSIONS

Nominal flow rate q_p	m ³ /h	0.6	1.5	2.5	3.5	6	10
Nominal pressure DN		15		20	25		40
Nominal pressure PN	bar	16					
Maximum flow rate q_s	m ³ /h	1.2	3	5	7	12	20
Minimum flow rate q_i	l/h	6	15	25	35	60	100
Head loss (0.1 bar)	m ³ /h	0.5/0.4	1.3/1.2	1.7/2.1	4.4		8.9
Temperature range	°C	5 ... 130					
a	mm	110		130	260		300
d	G	G 3/4"		G 1"	G 1 1/4"		G 2"
b	mm	21		22.6	51		48



FLANGED DESIGN – TECHNICAL DATA & DIMENSIONS

Nominal flow rate q_p	m^3/h	3.5	6	10	15	25	40	60	
Nominal pressure DN		25		40	50	65	80	100	
Nominal pressure PN	bar	25							
Maximum flow rate q_s	m^3/h	7	12	20	30	50	80	120	
Minimum flow rate q_i	l/h	35	60	100	150	250	400	600	
Headloss (0.1 bar)	m^3/h	4.4		8.9	13.3	30.0	36.0	50.6	
Temperature range	$^{\circ}C$	5 ... 130							
c	mm	115		150	165	185	200	235	
d	mm	85		110	125	145	160	190	
Bores	n	4				8			
a	mm	260		300	270	300		360	
f	mm	68		88	102	122	138	158	
b	mm	51		48	46	52	56	68	



HEAD LOSS

